

OSG Governor Pulley



OSG Set (Single Groove)



OSG Set (Double Groove)

Code	Pulley Dia D mm	Rope Dia mm	Nominal Speed max m/s	Tripping Speed speed m/s
FIOSG 1	300	6-8	0.50	0.63
FIOSG 2	300	6-8	0.63	0.80
FIOSG 3	300	6-8	0.82	0.98
FIOSG 4	300	6-8	1.00	1.25
FIOSG 5	300	6-8	1.20	1.58
FIOSG 6	300	6-8	1.50	1.85
FIOSG 7	300	6-8	1.60	2.00
FIOSG 8	300	6-8	1.80	2.30
FIOSG 9	300	6-8	2.00	2.60

OSG MRL Pulley



OSG MRL (200) BOTTOM PULLEY

Pulley Diameter (D) mm	Counter Weight	Speed Governor Suitability	Direction
200	10, 13, 17, 22 Kg	OSGTP200MRL	Down
200	10, 13, 17, 22 Kg	OSGTP200MRL	Up/Down



OSG MRL (200) S.M TOP PULLEY

OSGTP300RUD	Uni Directional
OSGTP300RBD	Bi Directional
Nominal Speed	0.32 - 1.5 m/s
Tripping Speed	0.40 - 1.85 m/s
Ø Rope	6 & 8 mm

- Compact Design & Quite reliable for control the speed.
- Easy installation of Governor in the system.
- Operation even at adjusted tripping speed in both directions.
- Safety switch is provided for electrically control the traction machine.
- Ball bearings are inserted on both pulley to avoid noise and smooth movement with low maintenance.
- Test groove is provide for testing the governor at site.
- Pulley made out of quality graded castings for better friction and grip with rope.
- Each Governor set is tested on adjustable tripping speed and locked on required speed when assembled.

Elevator Gate Lock



Manufacturer, Exporter & Supplier of Elevator Gate Lock. Our product range also comprises of Elevator Guide Shoe, Elevator Pulleys Etc.

We are an unparalleled name engaged in offering a premium quality range of Elevator Gate Lock. To meet the varied needs of our patterns, we offer this lock in various sizes and other specifications. Under the stern vigilance of deft professionals, the provided lock is manufactured using the best quality raw material at our production unit. Further to ensure the optimum quality, offered lock is inspected by our quality controllers on several parameters of quality.

Features :

- Optimum performance
- Corrosion-resistance
- Excellent finish

RR CAM

Manufacturer, Exporter & Supplier of R R Elevator Cam. Our product range also comprises of Elevator Over Speed Governor, Guide Shoe, Pulleys and Gate Lock.

We introduce ourselves as an affluent organization, engaged in offering premium quality RR Elevator Cam. Under the supervision of our adept professionals, our offered cam is manufactured using premium quality raw material and progressive techniques. To ensure the smooth operation, provided cam is sternly checked by our quality controllers on predefined standards. We offer this cam in various specifications as per the preferences of our prestigious clients at affordable price.

Features :

- Noise Less
- Maintenance Free
- Compact Design & Smart Look
- Easy Installation
- Available in 110V / 220V.
- It Works in Pneumatic Principal.
- It Working Pressure can be Adjustable.



Elevator Components



Exel Type Car Shoe



Counter Shoe



Otis Type Car Shoe



Safety Block



Guide Shoe



SM Guide Shoe



Brack Coil



Inspection Box



G.P. Bracket



Otis Type Gate Lock



Otis Type Retaining Cam



Junction Box



Thimble



Limit Patta



COMPANY PROFILE

Incorporated in the year 2001 at Ahmedabad (Gujarat, India), we "Flowsafe Industries" is Sole Proprietorship organization engaged in Manufacturing and Supplying the best quality range of Elevator Parts like Over Speed Governor, Gate Lock, Pulleys, RR Cam, And Guide Shoe. These elevator parts are manufactured with high precision from top grade raw material and cutting-edge technology under the direction of our qualified team of professionals. The offered products are highly appreciated for their high strength, robust design, hassle-free functionality, easy installation and long service life. To fulfill varied needs of our respected clients, we provide these products in numerous specifications. We assure our clients that these products are properly tested against numerous parameters in order to provide defect free products to the patterns. We sell these products under the brand name "ELEZONE" and deliver these within the predefined time frame at most genuine rates.



RELATIONSHIP

We have constructed a large infrastructural unit that assists us in making a commendable range of elevator parts. This unit comprises numerous sub-divisions that are resourced with all required amenities and managed under the direction of our veteran team of professionals. We also assure our customers that these elevator parts are stringently examined on diverse parameters before being delivered to the clients. We have placed our organization at the peak of success in this domain due to our ethical business policies, affordable pricing, client-focused approach, flexible payment modes, positive records and excellent logistic facility.



VISION

Being a quality-centric firm, we lay primary focus on the quality of the offered elevator parts. Under the able headship of "Mr. Dipak Panchal" (Proprietor), we have created a strong position for ourselves in this domain.

WHY US ?

By sincere effort of our dexterous professions, we have been able to offer optimum quality products to our clients. All these products are available at best prices and within the assured time period. Following are the reasons for which we are widely uploaded in the market :

- Team of Professionals
- Cost-effective pricing
- Qualitative Products
- Wide distribution network
- Total Quality Management
- Total quality management
- Advanced Infrastructure



TARGET

ELEZONE®

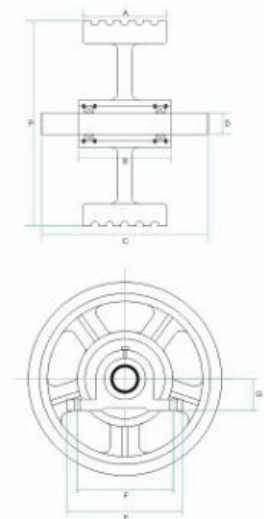
Flowsafe INDUSTRIES
MFG. & SUPPLIER : ELEVATORS & PARTS
ISO 9001:2015 Certified

www.flowsafeindustries.com

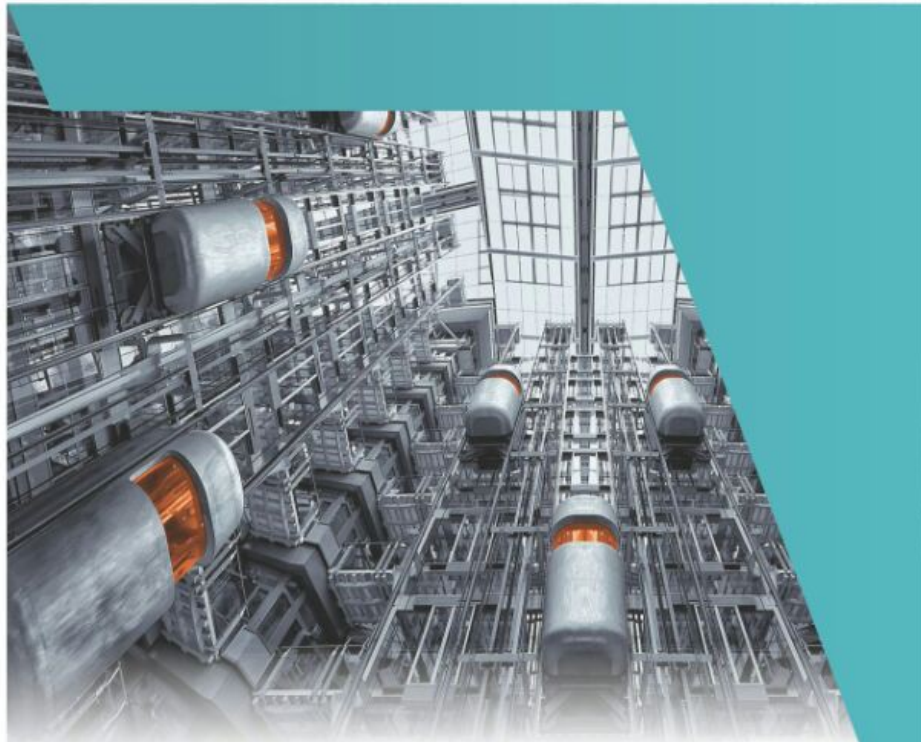
Diverter Pulley



Code	Pulley Diameter	No. of Groove	A	B	C	D	E	F	G	STATIC LOAD K.G.
DP 1	150	3	70	75	300	50	185	145	45	1800
DP 2	150	4	80	85	300	50	185	145	45	1800
DP 3	150	5	95	100	300	50	185	145	45	1800
DP 4	200	3	70	75	300	50	185	145	45	2000
DP 5	200	4	70	75	300	50	185	145	45	2000
DP 6	200	4	80	85	300	50	185	145	45	2500
DP 7	200	4	90	95	300	50	185	145	45	3900
DP 8	200	5	95	100	300	50	185	145	45	3900
DP 9	200	5	105	110	300	50	185	145	45	6300
DP 10	250	3	70	75	300	50	185	145	45	6300
DP 11	250	3	70	75	300	50	185	145	45	3900
DP 12	250	4	80	85	300	50	185	145	45	3900
DP 13	250	4	90	95	300	50	185	145	45	3900
DP 14	250	5	95	100	300	50	185	145	45	1800
DP 15	250	5	105	110	300	50	185	145	45	2000
DP 16	300	3	70	75	300	50	185	145	45	2000
DP 17	300	3	70	75	300	50	185	145	45	2500
DP 18	300	4	80	85	300	50	185	145	45	1800
DP 19	300	4	90	95	300	50	185	145	45	1800
DP 20	300	5	95	100	300	50	185	145	45	1800
DP 21	300	5	105	110	300	50	185	145	45	1800
DP 22	320	3	70	75	300	50	185	145	45	1800
DP 23	320	3	70	75	300	50	185	145	45	2000
DP 24	320	4	80	85	300	50	185	145	45	2000
DP 25	320	4	90	95	300	50	185	145	45	2000
DP 26	320	5	95	100	300	50	185	145	45	3900
DP 27	320	5	105	110	300	50	185	145	45	3900
DP 28	400	3	70	75	300	60	185	145	60	3900
DP 29	400	3	70	75	300	60	185	145	60	6300
DP 30	400	4	80	85	300	60	185	145	60	6300
DP 31	400	4	90	95	300	60	185	145	60	6300
DP 32	400	5	95	100	300	60	185	145	60	1800
DP 33	400	5	105	110	300	60	185	145	60	1800
DP 34	525	3	70	75	300	60	185	145	60	2000
DP 35	525	3	70	75	300	60	185	145	60	2000
DP 36	525	4	80	85	300	60	185	145	60	5000
DP 37	525	4	90	95	300	60	185	145	60	5000
DP 38	525	5	95	100	300	60	185	145	60	5000
DP 39	525	5	105	110	300	60	185	145	60	5000



Pulleys also available as per customer specifications & drawings



Flowsafe INDUSTRIES
MFG. & SUPPLIER : ELEVATORS & PARTS

ISO 9001:2015 Certified



Flowsafe INDUSTRIES
MFG. & SUPPLIER : ELEVATORS & PARTS

ISO 9001:2015 Certified

57, Kailash Estate, B/h. Sirhind Steel Mill, Odhav, Ahmedabad-382415.

M : 09737398415, 9879624010, 8980560877

E-mail : flowsafeind@gmail.com, info@flowsafeindustries.com

Web : www.flowsafeindustries.com

ELEZONE®

www.flowsafeindustries.com